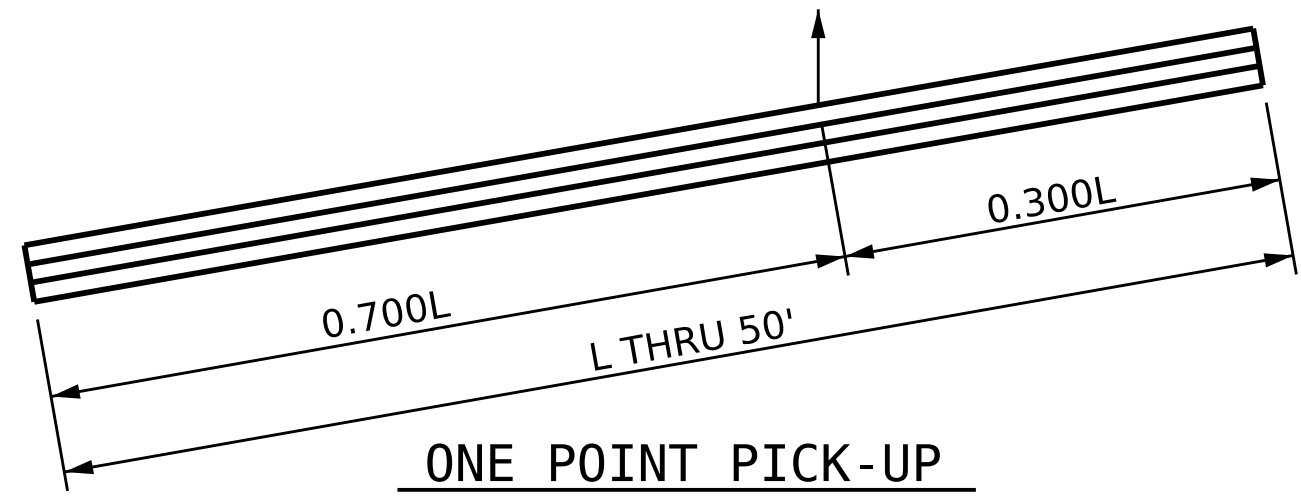
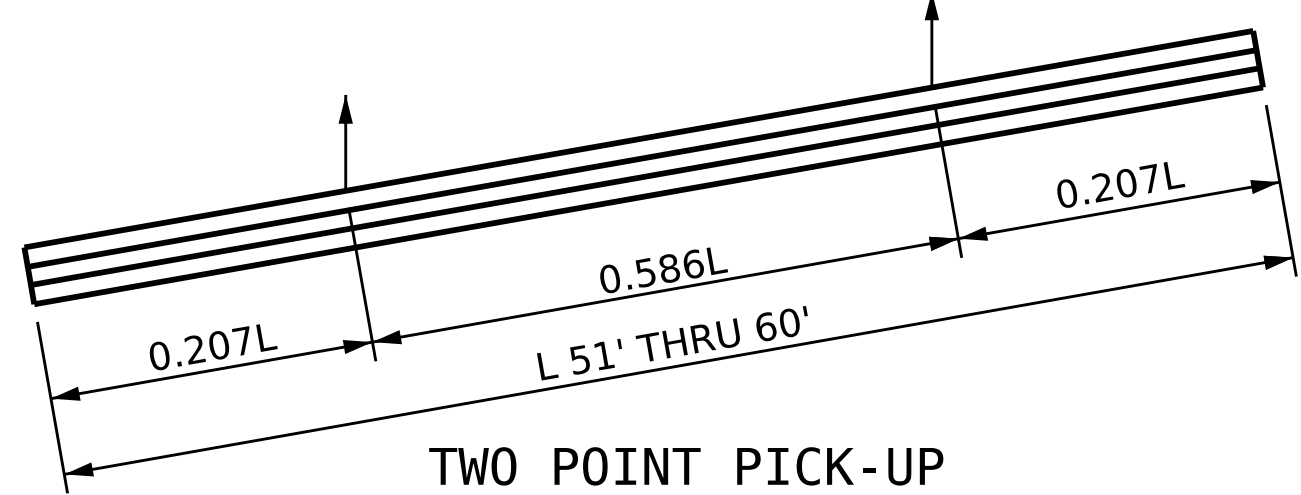


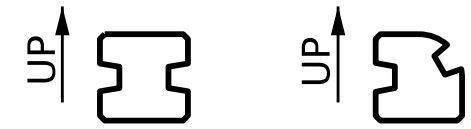
ELEVATION



ONE POINT PICK-UP



TWO POINT PICK-UP



PICK-UP POINTS

QUANTITIES FOR ONE PRECAST CONCRETE PILE					
LENGTH	APPROX. PILE WT. TONS	ONE PICK-UP POINT		TWO PICK-UP POINTS	
		0.300L	0.700L	0.207L	0.586L
10'-0"	1.56	3'-0"	7'-0"		
15'-0"	2.35	4'-6"	10'-6"		
20'-0"	3.14	6'-0"	14'-0"		
25'-0"	3.93	7'-6"	17'-6"		
30'-0"	4.70	9'-0"	21'-0"		
35'-0"	5.49	10'-6"	24'-6"		
40'-0"	6.28	12'-0"	28'-0"		
45'-0"	7.05	13'-6"	31'-6"		
50'-0"	7.84	15'-0"	35'-0"		
55'-0"	8.63			11'-4½"	32'-3"
60'-0"	9.42			12'-5"	35'-2"

NOTES

CONCRETE DESIGN DATA : f' c = 5,000 PSI

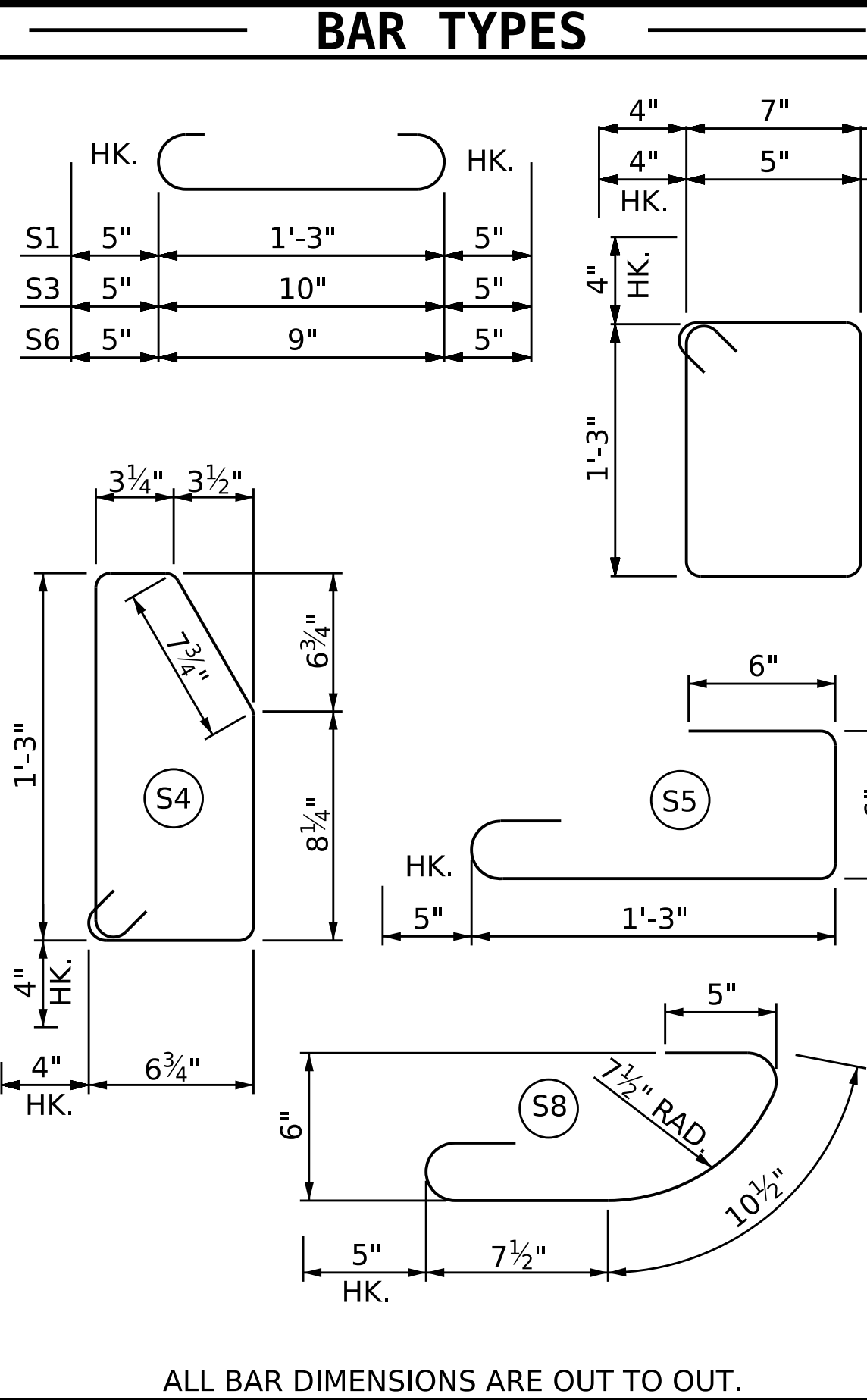
PROPOSED DEVICES FOR LIFTING PILES, RECESS DETAILS, AND PATCHING MATERIAL SHALL BE DETAILED IN SHOP DRAWINGS. AFTER ATTACHMENTS HAVE BEEN REMOVED, OPENINGS SHALL BE REPAIRED SUCH THAT THE APPEARANCE OF THE PILE IS UNIFORM.

WHERE CAST-IN-PLACE LIFTING DEVICES ARE NOT USED, PICK-UP POINTS TO BE INDICATED WITH A BLACK MARK 2" WIDE.

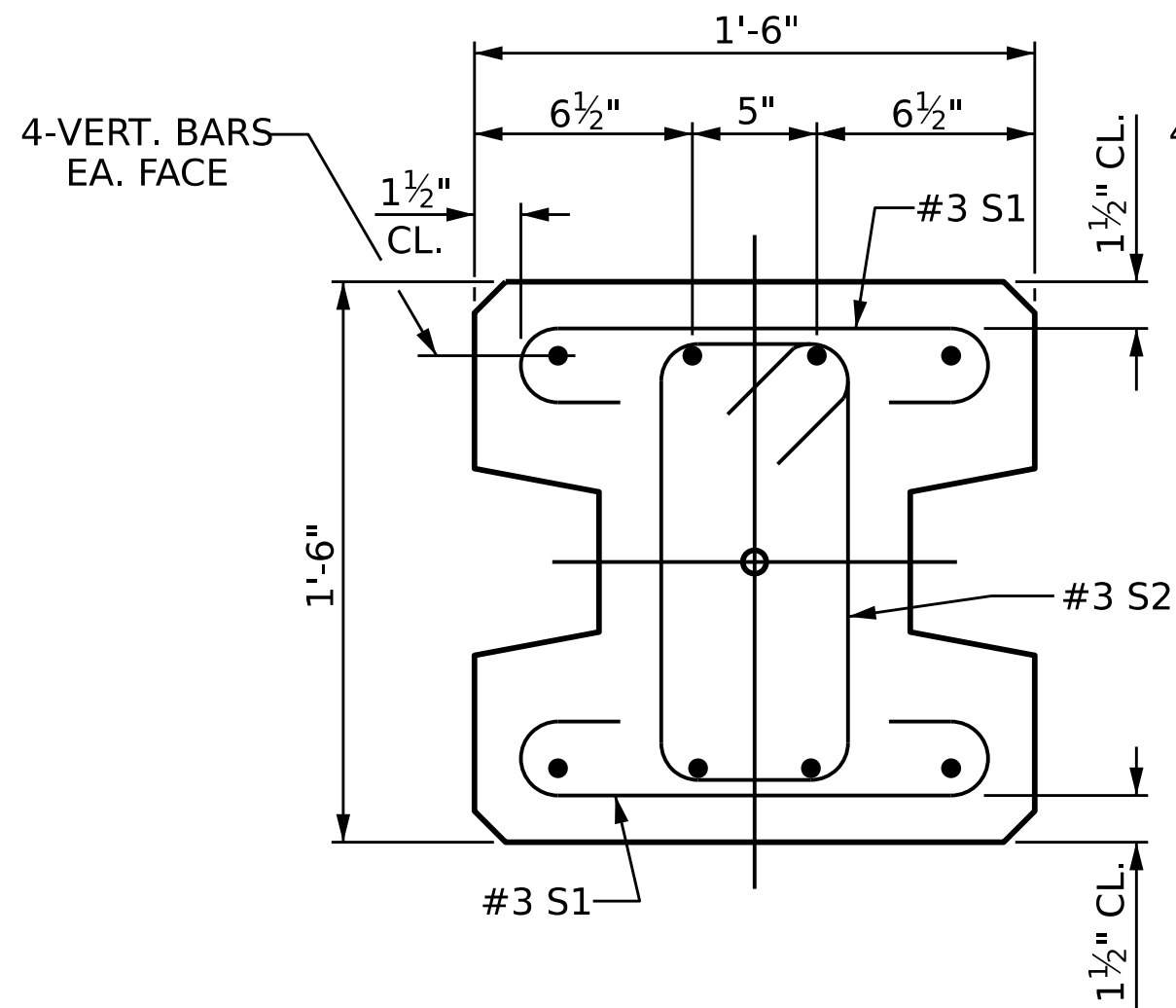
THE SLIP-FORM METHOD OF CASTING PILES WILL NOT BE PERMITTED.

ALL CORNERS TO BE CHAMFERED 1".

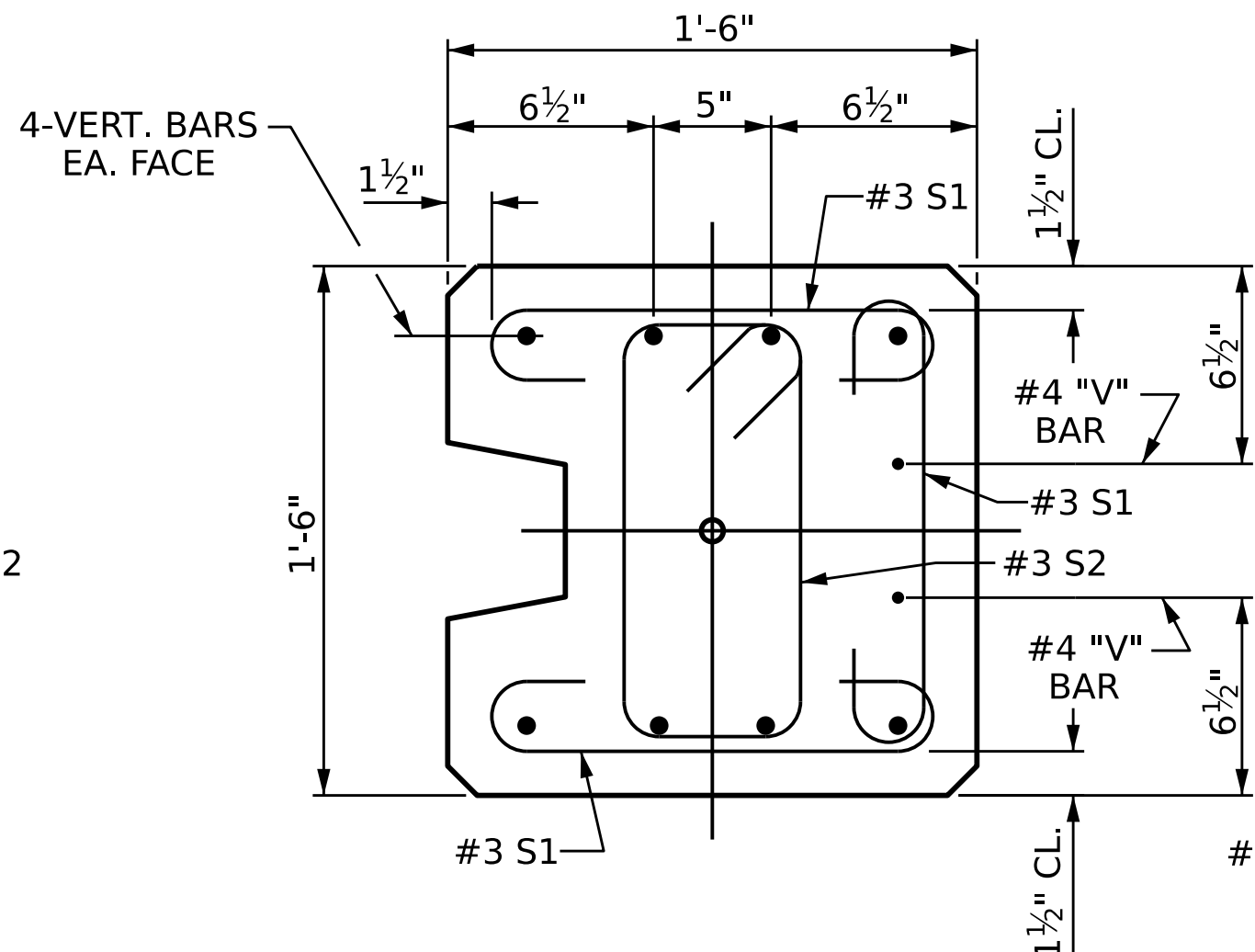
#3 @ 1'-4" CTS. TIES TO BE USED WITH ALL PILE TYPES.



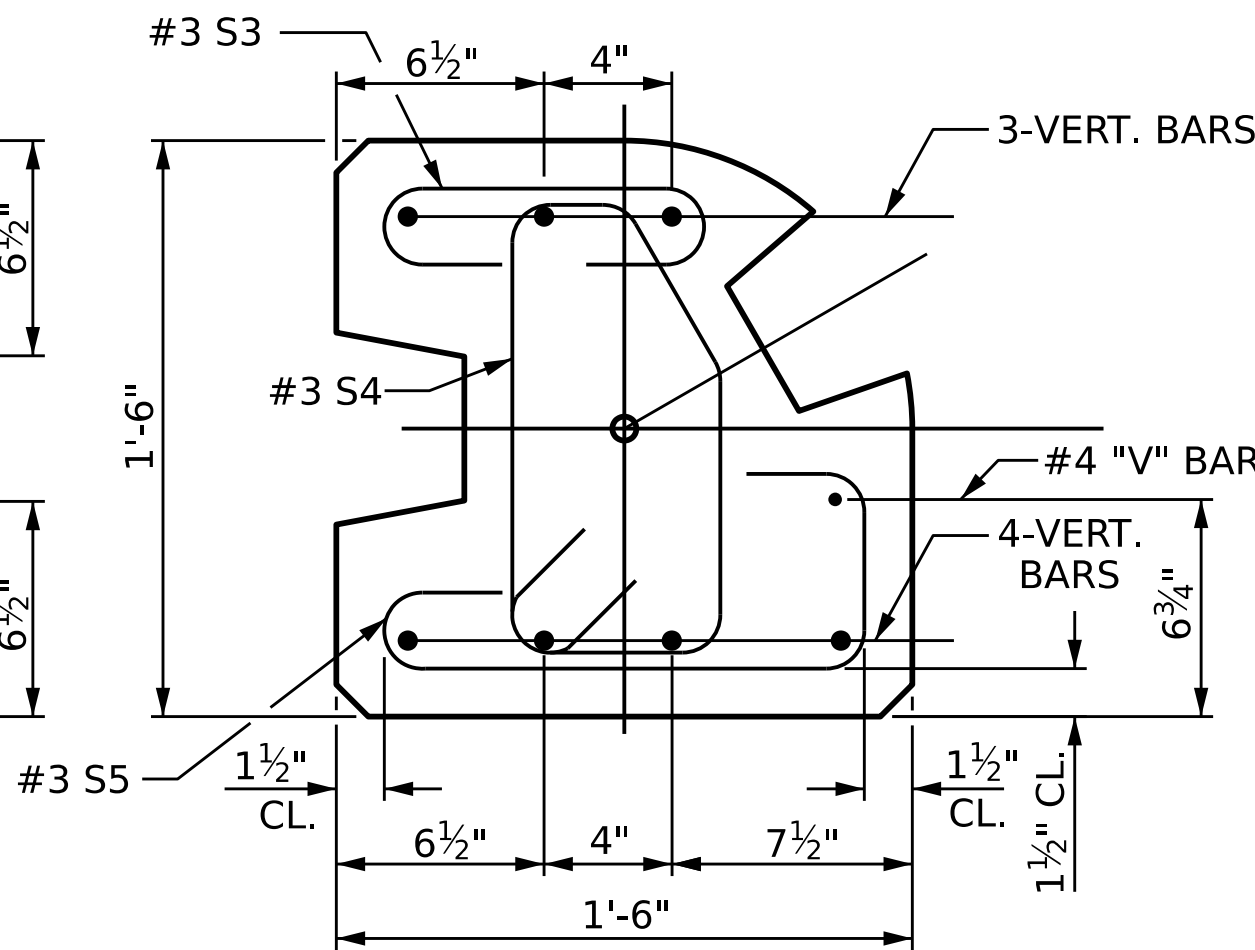
ALL BAR DIMENSIONS ARE OUT TO OUT.



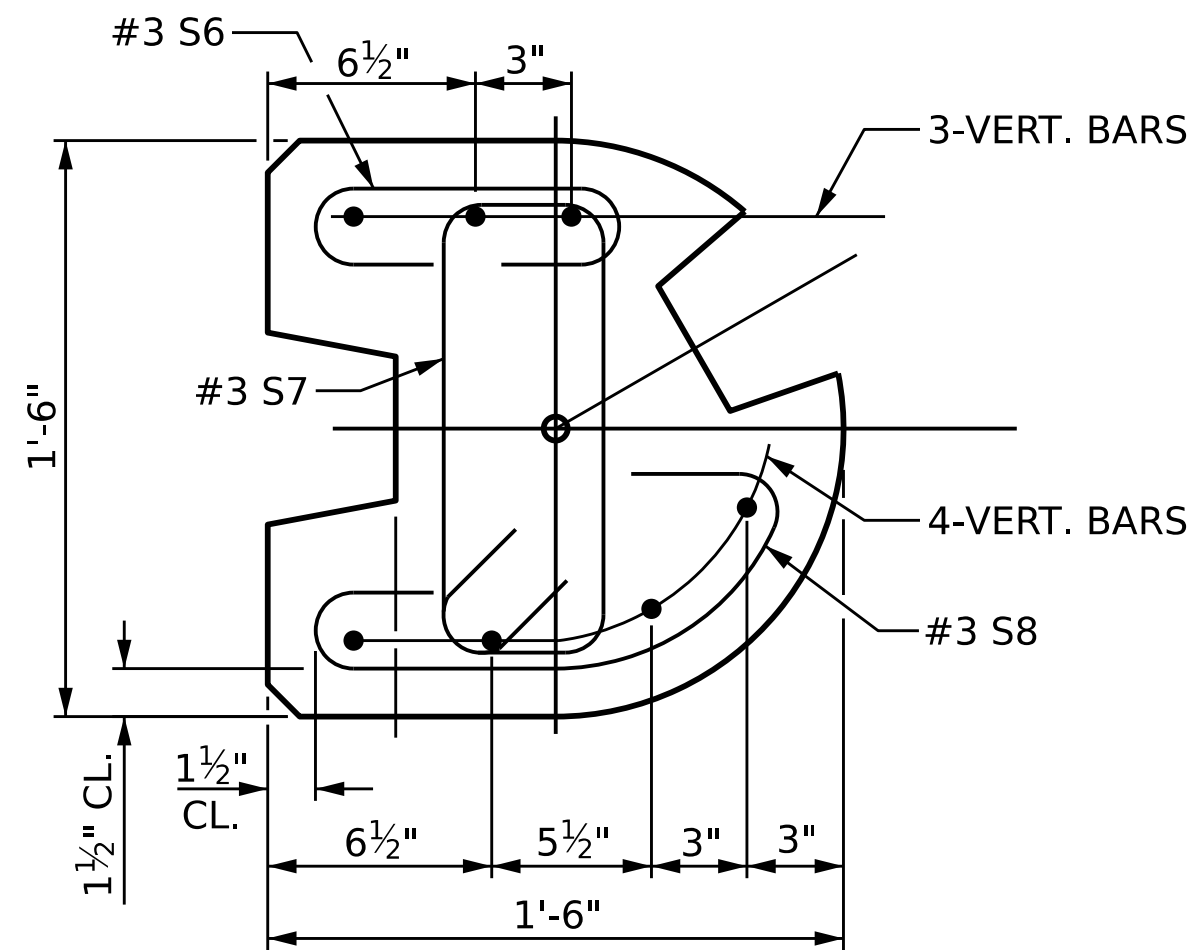
TYPE - I



TYPE - II



TYPE - III



TYPE - III (ALT.)

PILE DETAIL

FOR VERTICAL BAR PILE REINFORCING, SEE SHEET 1 OF 3

PROJECT NO. _____

_____ COUNTY

STATION: _____

STATE OF NORTH CAROLINA
DEPARTMENT OF TRANSPORTATION
RALEIGH

STANDARD

**SOUND BARRIER WALL
DETAILS**
(CONCRETE PILES)

ASSEMBLED BY:	DATE :
CHECKED BY :	DATE :
DRAWN BY : MAA	REV. 01/14
CHECKED BY : GM	REV. 12/17
	REV. 12/23
	RWW/TMG
	MAA/THC
	BNB/AYG

1/9/2024
S:\DEV\Squad.D\EDS Documents\Standards\working Standards\2021 SBW\SBW BNB\2024 SBW REV WITH WIND LOAD\sbw3.24.dgn
bbarodagala

DOCUMENT NOT CONSIDERED
FINAL UNLESS ALL
SIGNATURES COMPLETED

REVISIONS				SHEET NO.
NO.	BY:	DATE:	NO.	
1			3	TOTAL SHEETS
2			4	

STD. NO. SBW3